

Mike
Dobson



6 Apple Tree Lane
Kippax, Leeds, LS25 7SB

£190,000

6 Apple Tree Lane

Being sold with no onward chain is a three bedroom end town house, set over three floors, located within walking distance to Kippax High Street. Easy access to schools, public transport and within easy reach of the A1/M1 motorway. The accommodation briefly comprises of entrance hall, ground floor WC, kitchen, lounge, first floor landing leading to bedroom two, bedroom three and bathroom/W.C., second floor landing leading to bedroom one with en-suite bathroom. In addition to the property has PVCu double glazed windows, PVCu double glazed French doors from the lounge leading out to the rear garden, kitchen with gas hob, extractor, and built in oven. Outside, to the front of the property is a pathway with shrubs leading to the front door. There is a tarmac driveway to the side providing off-road parking. To the rear of the property is a fully enclosed garden with lawn and decked patio seating area.

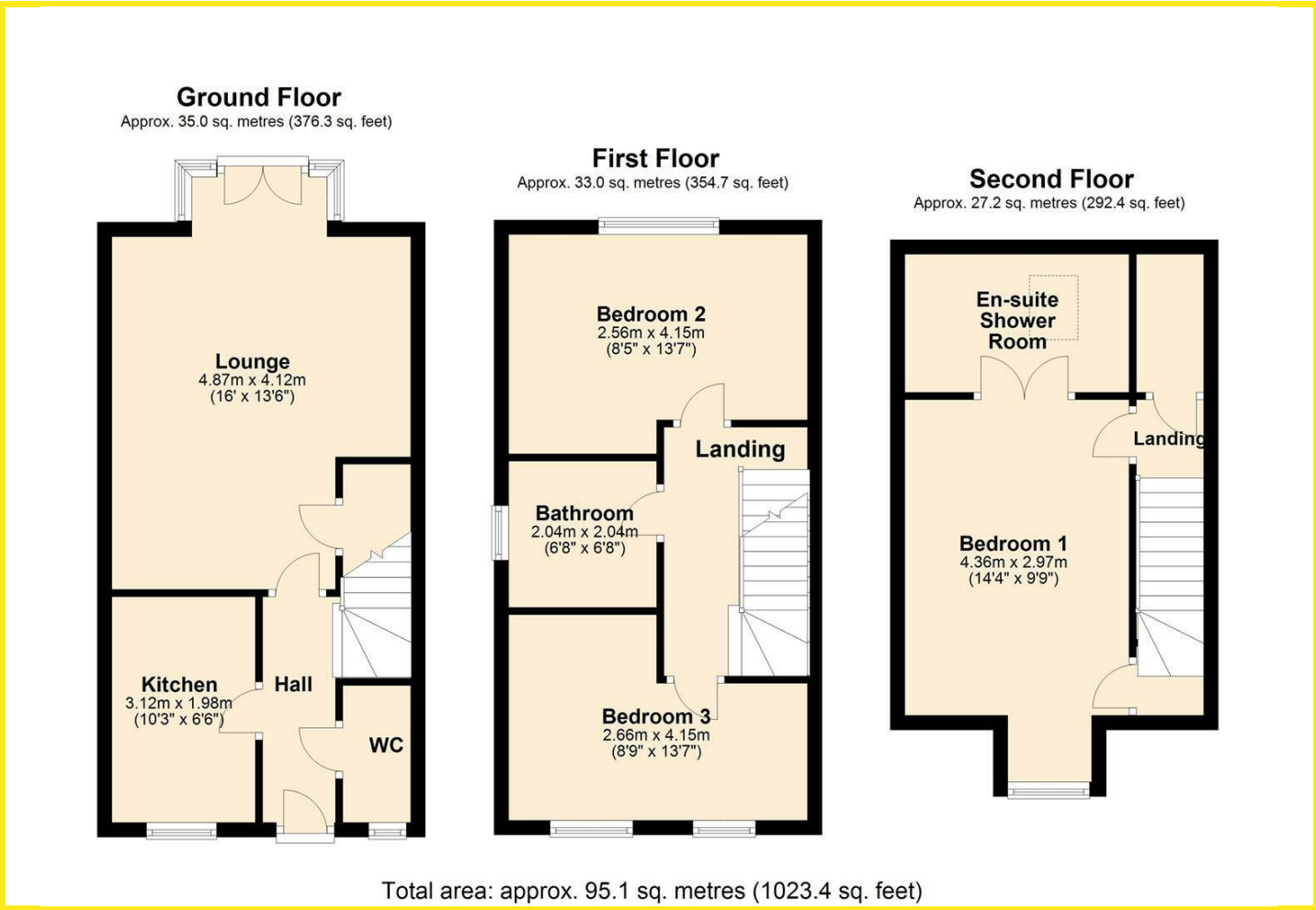
The property does require updating and has been reflected with the price.

Council tax band C





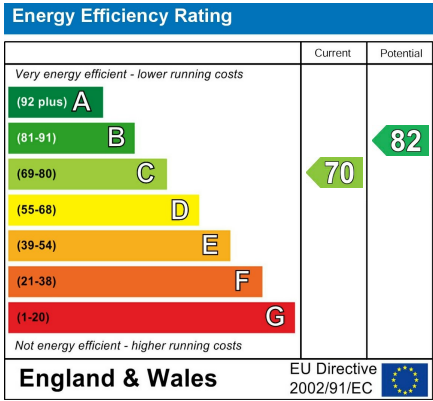
Floor Plan



Area Map



Energy Efficiency Graph



Directions

From our Kippax office turn right up the High Street taking the fourth turning onto Apple Tree Lane, where the property can be found on the right hand side.

These particulars, whilst believed to be accurate are set out as a general outline only for guidance and do not constitute any part of an offer or contract. Intending purchasers should not rely on them as statements of representation of fact, but must satisfy themselves by inspection or otherwise as to their accuracy. No person in this firms employment has the authority to make or give any representation or warranty in respect of the property.